



SGS

SRK Grading System

World's 1st ISO Certified
Diamond Grading System

PURE TRANSPARENCY



CARAT

Ct.	0.30	0.50	0.70	1.00	1.50	2.00	3.00	5.00	10.00	15.00	20.00	30.00
Dia. (mm)	4.30	5.10	5.68	6.40	7.30	8.05	9.20	10.90	13.70	15.75	17.33	19.84
Total Depth (mm)	2.68	3.18	3.55	3.98	4.55	5.00	5.72	6.80	8.55	9.78	10.75	12.3

CLARITY

FL		VVS		VS		SI		I	
FL Flawless IF Internally Flawless		VVS1 Very Very Slightly Included 1 VVS2 Very Very Slightly Included 2		VS1 Very Slightly Included 1 VS2 Very Slightly Included 2		SI1 Slightly Included 1 SI2 Slightly Included 2 SI3 Slightly Included 3		I1 Included 1 I2 Included 2 I3 Included 3	

COLOR

Colorless D-E-F	Near Colorless G-H-I-J	Faint K-L-M	Very Light N to R	Light S to Z

FANCY COLOR

Intensity Faint Light Intense Vivid Deep Dark	Color Yellow Pink Blue Green Purple Orange Gray Brown	Overtone Brownish Greenish Yellowish Pinkish Purplish Grayish Orangi
---	--	---

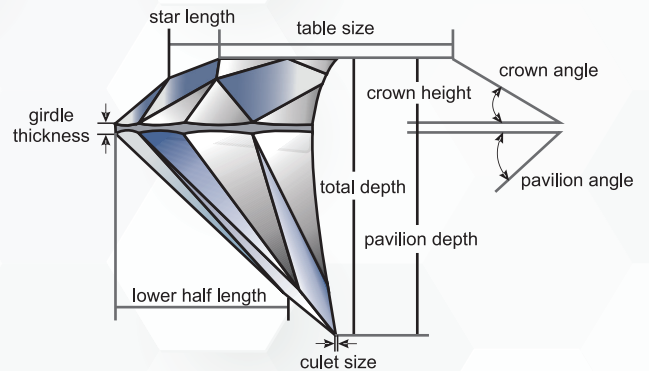
CUT

EX Excellent Cut	VG Very Good Cut	G Good Cut	F Fair Cut
EX Excellent Polish	VG Very Good Polish	G Good Polish	F Fair Polish
EX Excellent Symmetry	VG Very Good Symmetry	G Good Symmetry	F Fair Symmetry

POLISH

SYMMETRY

Major factors that affect Cut:



FLUORESCENCE



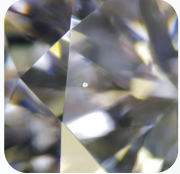

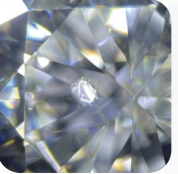


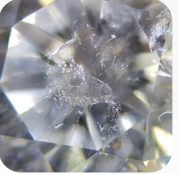
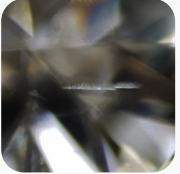
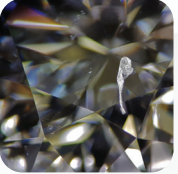

Fluorescence Intensity

NON None or No Fluorescence	FNT Faint Fluorescence	MED Medium Fluorescence	STG Strong Fluorescence	VST Very Strong Fluorescence




Fluorescence Color

BLUE Blue Fluorescence	YELLOW Yellow Fluorescence	WHITE White Fluorescence	ORANGE Orange Fluorescence	BLUISH GREEN Bluish Green Fluorescence
----------------------------------	--------------------------------------	------------------------------------	--------------------------------------	--

WHITE INCLUSION



	PIN POINT		CRYSTAL			
N None or No White Inclusion						
	PP1 Pin Point Minor Inclusion	PP2 Pin Point Medium Inclusion	CRL1 Crystal Minor Inclusion	CRL2 Crystal Medium Inclusion	CRL3 Crystal Heavy Inclusion	
	SPREADED			FEATHER		
						
	SPR1 Spreaded Minor Inclusion	SPR2 Spreaded Medium Inclusion	SPR3 Spreaded Heavy Inclusion	FR1 Feather Minor Inclusion	FR2 Feather Medium Inclusion	FR3 Feather Heavy Inclusion

CLOUD

		
CLD1 Cloud Minor Inclusion	CLD2 Cloud Medium Inclusion	CLD3 Cloud Heavy Inclusion

SGS specifies White Inclusion for 2 sections: **Table | Side**

BLACK INCLUSION

N None or No Black Inclusion				
	BPP Pin Point Black Inclusion	B1 Minor Black Inclusion	B2 Medium Black Inclusion	B3 Heavy Black Inclusion

SGS specifies Black Inclusion for 2 sections: **Table | Side**

SPOT INCLUSION

N None or No Spot Inclusion					
	PP Pin Point	R1 Red Minor	R2 Red Medium	G1 Green Minor	G2 Green Medium

SGS specifies Spot Inclusion for 2 sections: **Table | Side**

OPEN INCLUSION

N None or No Open Inclusion				
	HL Hair Line Open Inclusion	SM Small Open Inclusion	MD Medium Open Inclusion	HV Heavy Open Inclusion

SGS specifies Open Inclusion for 4 sections: **Table | Crown | Pavilion | Girdle**

LUSTER LEVEL OF BRILLIANCE

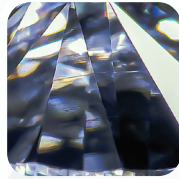
BRILLIANCE			MILKY GRADES		
EX Excellent Luster	VG Very Good Luster	G Good Luster	ML1 Slight Milky	ML2 Medium Milky	ML3 Heavy Milky

SHADES

N None or No Shade	BT Brown Tinge	LB Brown Shade	MT1 Light Mixed Tinge	MT2 Deep Mixed Tinge	GT Green Tinge	PT Pink Tinge
------------------------------	--------------------------	--------------------------	---------------------------------	--------------------------------	--------------------------	-------------------------

GRAINING

N
None or No Graining



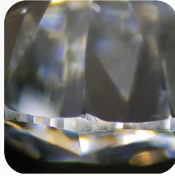
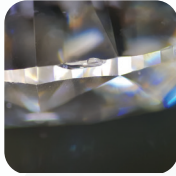

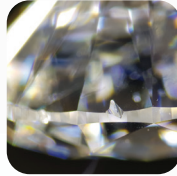
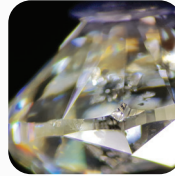

IG
Internal Graining



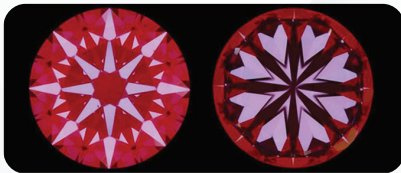
SG
Surface Graining

IG & SG
Internal & Surface Graining

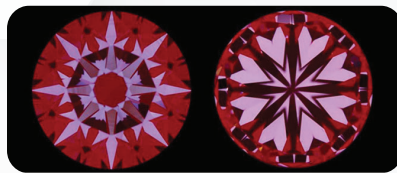
NATURAL

NATURAL			INDENTED NATURAL				
N None or No Natural							NTINT Natural and Indented Natural
	NT – SM Natural Small	NT – MD Natural Medium	NT – HV Natural Heavy	INT – SM Indented Small	INT – MD Indented Medium	INT – HV Indented Heavy	

HEART & ARROW



EX
Excellent Heart & Arrow



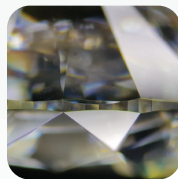
VG
Very Good Heart & Arrow



G
Good Heart & Arrow

EXTRA FACET

N
None or No Extra Facet



SM
Small Extra Facet



MD
Medium Extra Facet



HV
Heavy Extra Facet

SGS specifies Extra Facet for 3 sections: **Table | Crown | Pavilion**

ELIGIBLE GOODS

TheFootPrints
Trace The Diamond Journey

FP
Footprints Eligible Goods

DE BEERS
FOREVERMARK

FME
Forevermark Eligible Goods

CANADAMARK
Approved Manufacturer

CME
Canadamark Eligible Goods

CODE OF ORIGIN
ELIGIBLE

COO
Code of Origin Eligible Goods

SGS COMMENTS

EXCLUSIVE COLOR

If SGS Graded Color is "G" and Laboratory certifies it as "H", then SGS specifies "EXCLUSIVE COLOR" in the comment column.

EXCLUSIVE CLARITY

If SGS Graded Clarity is "VS2" and Laboratory certifies it as "SI1", then SGS specifies "EXCLUSIVE CLARITY" in the comment column.

EXCLUSIVE FLUORO

If SGS Graded Fluorescence is "FAINT" and Laboratory certifies it as "MEDIUM", then SGS specifies "EXCLUSIVE FLUORESCENCE" in the comment column.

BROWN TINGE

SGS specifies "BROWN TINGE" in the comment, when it has comparatively Light Brown Shade of color. Normally with D, E & F Color. G color may or may not have Brown Tinge.

MIX TINGE 1

SGS specifies "Mix Tinge 1" in the comment, when it has comparatively Light Mixed Tinge of Yellow and Brown / Other colors.

(--) INSPECTION ADVISABLE

According to SGS, diamond has LC shade, but it might be considered as Very Very Slight Brown Shade. SGS advises you to get it inspected personally or by your KAM (our Business Multiplier) at SRK before buying.

-- For Brown Shade

EYE CLEAN

No Inclusions visible to the "Naked Eye" when viewed from the "Face Up" position in Daylight or Equivalent Spot Lighting from a relatively short distance of 6 - 10 Inches approximately. Normally with SI1 and lower clarity grade.

UPGRADED COLOR

If SGS Graded Color is "H" and Laboratory certifies it as "G", then SGS specifies "UPGRADED COLOR" in the comment column.

UPGRADED CLARITY

If SGS Graded Clarity is "SI1" and Laboratory certifies it as "VS2", then SGS specifies "UPGRADED CLARITY" in the comment column.

UPGRADED FLUORO

If SGS Graded Fluorescence is "MEDIUM" and Laboratory certifies it as "FAINT", then SGS specifies "UPGRADED FLUORESCENCE" in the comment column.

BROWN

SGS specifies "BROWN" in the comment, when it has comparatively Deep Brown Shade of color.

MIX TINGE 2

SGS specifies "Mix Tinge 2" in the comment, when it has comparatively Deep Mixed Shade of Yellow and Brown / Other colors.

(#) INSPECTION ADVISABLE

According to SGS, it has LC shade, but it might be considered as Very Very Slight Mixed Shade of Yellow and Brown / Other colors. SGS advises you to get it inspected personally or by your KAM (our Business Multiplier) at SRK before buying.

For Mixed Shade

Shree Ramkrishna Exports Pvt. Ltd. (SRK)

Since more than 6 decades, Shree Ramkrishna Exports Pvt. Ltd. (SRK) has been the epitome of Sophisticated Simplicity, Transparency and Ethics in the world of diamonds. Our finely crafted diamonds range from 0.30 - 30.00 cts., D - Z colors, and are available in all clarities and shapes. Our collection also includes vivid range of fancy colored diamonds. We are not only the largest diamond crafting company, but are also regarded as being a highly compliant company, holding the highest number of ISO certifications in the industry.



srk.one

ISO 9001 | ISO 14001 | ISO 45001 | ISO 22000 | ISO 50001 | PAS 7000 | ISO 24016

PURE RELATIONSHIPS



SIGHTHOLDER is a trade used under licence from The De Beers Group of Companies | Forevermark is a part of The De Beers Group of Companies

PURE LIGHT